

# WASHING MACHINES GWM-GWN

With G4-Wiz control



# WASHING MACHINES

GWM8

GWM11

GWM14

GWN18

GWN24

GWN28

# A spin never unbalanced

**A new and innovative design borrowed from the high-tech sector, but the same mechanical, functional and performance qualities of our traditional equipment.**

## Precision weighing. Standard!

Our patented precision weighing system (DWS) is available as a standard on the G4-Wiz washing machines. The DWS system weighs the laundry and the data are processed by the control system which calculates the exact amount of resources needed. In this way, the machine adapts itself, with extreme precision, to every minimal variation of loading. The management of consumption is no longer limited to a few preset options, only the resources strictly necessary are used according to the laundry loaded.

## Steel core, velvet touch

Beyond the features listed above, this family of washing machines adds another distinctive trait which increases significantly its quality and makes it the solution that no one wants miss. These machines, thanks to their rigid and solid framework, will always allow to arrive at the end of the cycle. These devices are able to ensure an optimal outcome in every condition of installation and use. The nature or the amount of laundry, the experience and the competence of users or the environmental conditions in which the machines work, don't weigh on the performances. The result is guaranteed. Always!

## To each his own

G4-Wiz washing machines are available in six different capacities, to meet the various load needs. From 75 to 280 litres (load ratio 1:10), you can choose the washing machine that best suits you. Every version has the same design characteristics to always guarantee the best quality result to each client. So you can choose the loading capacity that best suits your needs without sacrificing the high performance or the ease of use, the high savings or the low environmental impact.

## Safety is double!

There are double safety devices in every Grandimpianti washing machines. There are redundant alarm circuits just like on an airplane. In the unlikely event that a safety device fails, its double is immediately activated.

## New, Italian, contemporary design

Beauty and functionality. Aesthetics and ease of use. Design and ergonomics. Grandimpianti machines are made with meticulous attention to detail, even in terms of their appearance. The sizes of the doors, the position of the soap dispenser, the tempered glass, the rounded edges, and the size of the machines have all been designed for convenient and efficient use of the washing machine, optimising its overall dimensions. A design based on ergonomic criteria.





## Costs optimization

It saves up to 50% of detergent: the quantity of detergents being automatically adjusted by the patented DWS system. It saves, also, energy by optimising the amount of water to be heated. The presence of a second optional discharge valve, then, allows a greater time savings. These solutions mean less costs and environmental impact.



## Recycling rates

96% recyclability rate of machine. It's an ecological washing machine even at the end of its life-cycle. It's made of recyclable materials and therefore has low environmental impact even when you decide to change it. Materials such as the skinplate: a plastic film made of PVC. Many as 56% of PVC, indeed, is made of common salt, a completely renewable resource.



## Usability

Ergonomic and ease to use thanks to the wide opening door. The washing machine has a large portholes that guarantee an ease and fast loading and unloading of laundry. No wasted time and more attention to the user comfort.

## Time saving

Save your time also due to the large drain system. Thanks to the motorised 3-inch discharge valve, the machine discharges water quickly and allows to perform almost an additional full cycle for each shift.



## Less maintenance

Less maintenance costs due to the anti-lime heaters and the long-lasting seals. The heaters are made of INCOLOY® steel able to reduce the lime deposits. The EPDM seals, then, ensure long life. This means less maintenance for the washing machine.

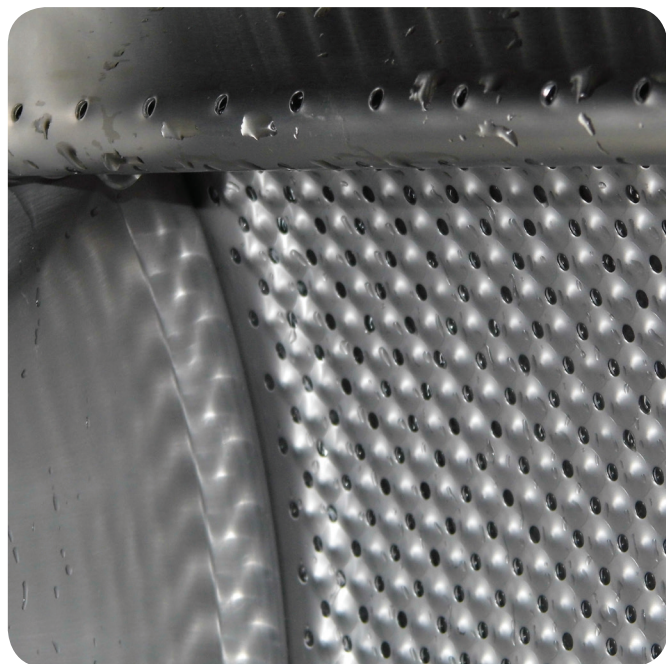
# Medium and normal spin speed washing machines with a soul

## Details count

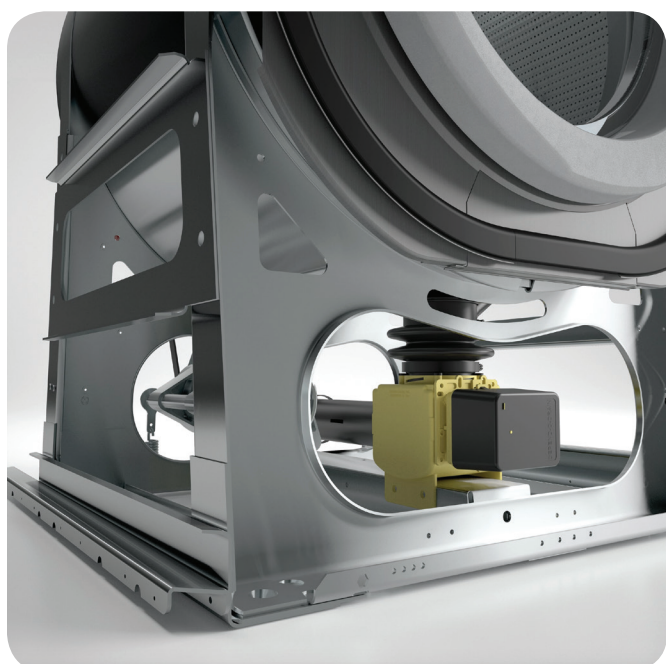
Let's get down to the details of the new GWM and GWN G4-Wiz washing machine to appreciate the newness that make this product great. New design and ergonomics are combined with the traditional features of Grandimpianti appliances. This short tour through the most representative details gives us a quick overview of its aesthetic and functional characteristics.



**A.** Innovative Italian design with shiny front and a graphic display. It was designed to be comfortably used even with gloves.



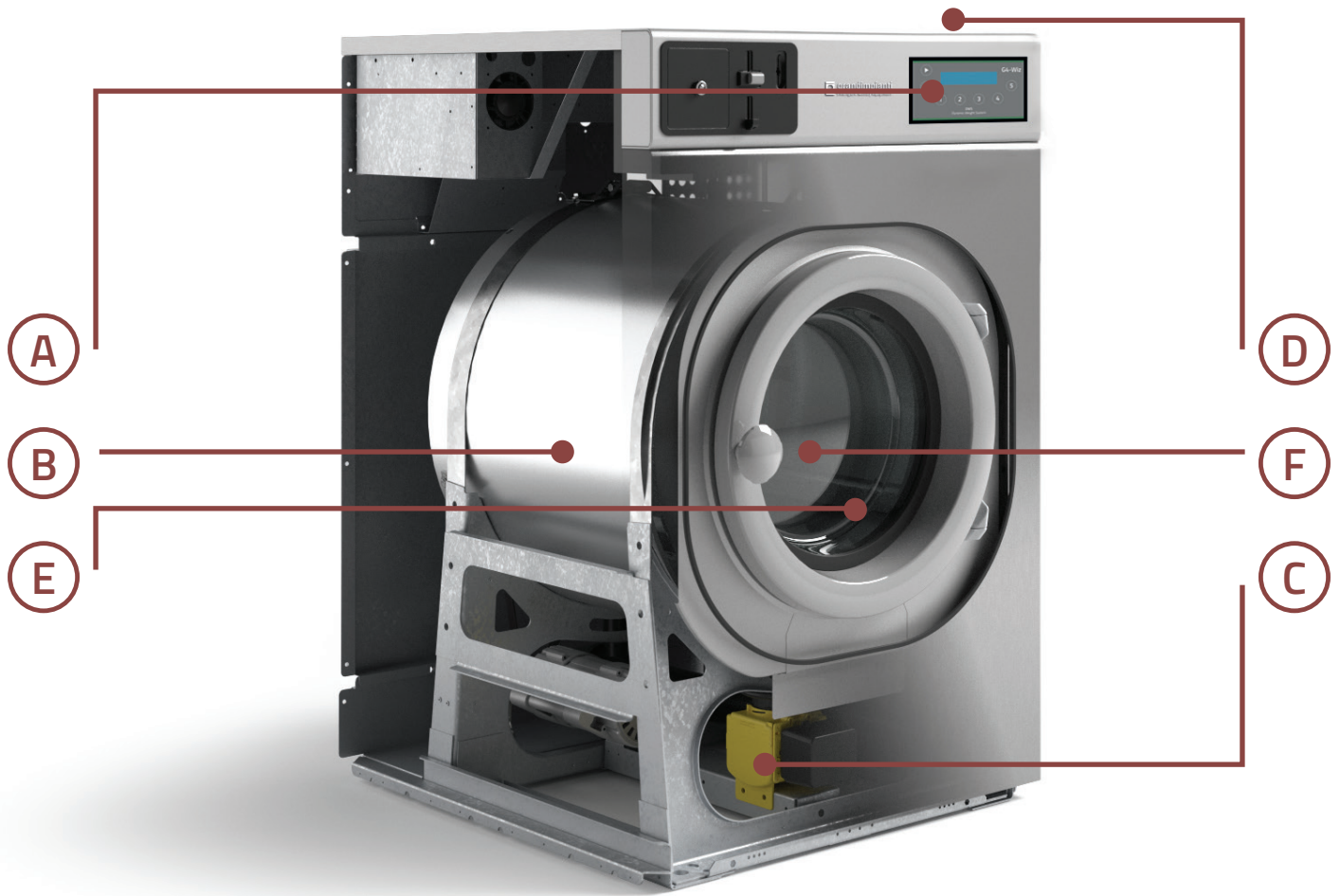
**B.** The stainless steel hemispheres of the drum ensure a gentle touch on the fabrics, even during the high spin cycle and avoid the water bounce. The large number of micro-holes of the drum guarantees a rapid flow of water.



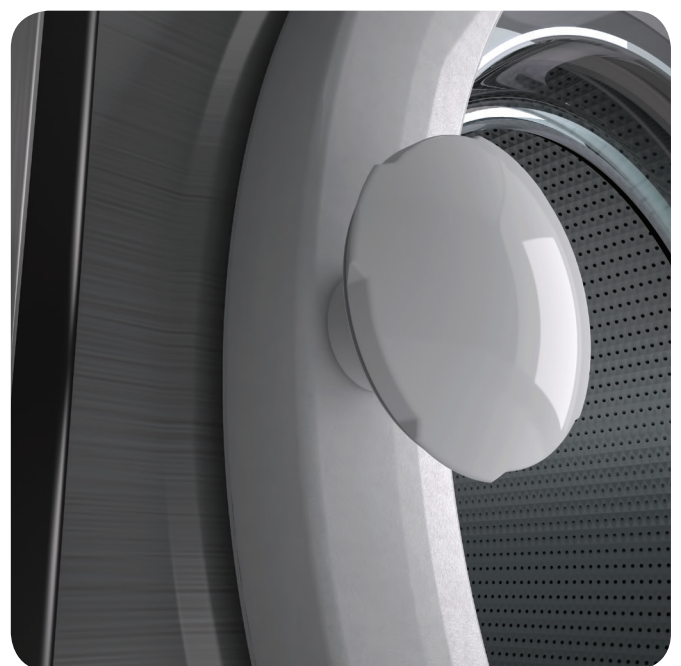
**C.** It has a rigid, solid and robust frame. There aren't any springs or shock absorbers because only the drum turns. This means less wear, minimum maintenance and low noise, without affecting to the cleaning benefits which remain consistently high.



**D.** 4 compartments soap dispenser ergonomically placed.



**E.** The large door which opens up to 180° facilitates the loading and unloading of the laundry. The EPDM seals ensure a tight seal.



**F.** Ergonomic knob: a slight rotation is enough to open the door. The exclusive Grandimpianti lock system keeps the door closed and locked until the rotation of the drum ends completely.

# Grandimpianti listens to the market



**We've always listened to our customers:  
today they're asking speed, connectivity and convenience.  
Our answer is an innovative solution that makes  
their job smarter, faster and easier.**

## Machines ready to go everywhere!

Listening, observing and analysing the market is crucial for us! We've always been opened to the world! This inclination has helped us to develop versatile and innovative machines, ready for different environments, industries and geographic areas: from small restaurant to large offshore platform, from food industry to cruise ships, from hospitals to self-service laundries and much more. But, above all, they are prepared to be always connected and easily managed from everywhere, anytime you need!

## National and international regulations

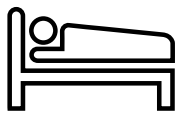
Collecting, analysing and developing the customer requirements is the vision that permit us to create solutions ready for sharing with a wider network of intelligences: the market. This also leads our solutions to conform to the international standard regulations (extra-UE included): we respect the safety and the environmental protection rules, therefore, our machines are ready for all markets and countries.







**A very complex target market that includes:**



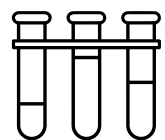
Hospitality industry



Professional laundry with Gentlewash® system



Nursing homes



Pharmaceutical industry



Mining camps



Oil facilities



Health service



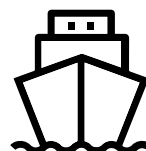
Industrial laundry



Dairy sector



Multi-Housing & self-service laundry (My Clean Clean)



Ships & marine transports



Catering service & restaurant

# Application areas of our products



## Restaurant and hospitality

In hotels, canteens or restaurants the textile products (napkins, tablecloths, sheets and towels), usually get in touch with everyone and everything, before they end up into the laundry drum. It's clear that assuring their perfect cleanliness and hygiene is crucial; moreover because, the consumers pay more attention now to this aspect. 85% of people who eats out, for example, wouldn't return into a restaurant if they considered it dirty. So, we offer a simple and effective solution: automatized and smart machines that allow the management of textile even by unskilled users and assure always great results, without waste or additional costs.

## Industrial and professional laundry

An industrial or professional laundry must handle a huge amount of different linen for both level of dirt and type of fabrics. It's therefore important to rely on efficient and versatile equipment, which are able to guarantee optimum results in term of cleanliness and hygiene, but also a soft touch on the delicate garments like one offered by Gentlewash®. Programmable and versatile machines, then, with special programs so as to adapt themselves to specific needs, but also simple, to be used even by less experienced employees.



## Self-service

A self-service laundry require simple to use, durable, safe and completely autonomous equipment. Washing machines and dryers equipped with an extremely intuitive control panel, a resistant and reliable mechanics and a maintenance program automatically managed by an efficient electronic control. Our company offer more than that: My Clean Clean is a reliable consulting service, with 40 years of experience, that follows the investor from the idea to the opening day.

## Cruise ship

Having reliable, safe and eco-saving equipment is important, especially aboard. Textile cleaning requires freshwater, definitely expensive and limited on a ship. Thanks to our patented DWS system (dynamic weighing system) our washing machines consume only the freshwater and the detergents strictly necessary, without waste. Moreover, since it sails on blue water, it's crucial to have reliable and safe equipment, which shall not break. Here we don't accept compromise: safety approved devices and redundant systems ensure the highest standard of efficiency and effectiveness, even in the ocean.

## Oil field

We provide the best solutions for the specific needs of the oil field, offering safe, sustainable, and simple solutions able to maximize the results, optimising water and energy consumption. To one of most complex and toughest sectors, that required strong and reliable equipment, we offer an unmatched durability.

## Mobile laundry

It's the perfect solution for medium/long-term construction sites, militarised areas, car washes, service areas, field hospitals and various types of emergencies. Mobile laundries are equipped with efficient, reliable and easy to use washing machines and professional dryers. Equipment that guarantee great results with low energy consumption (water, energy and detergents). All you need are the connections for electricity and water.

## Offshore platform

In a specific and difficult environment like an offshore platform are required heavy machines with long lifespan which can be able to wash and dry dirty working overalls, day after day. In a reduced amount of space available, we are able to create an efficient and complete laundry using strong, reliable and simple equipment. Professional machines that offer great performances with low noise and a minimum energy and water consumption.

## Food industry

Food processing facilities deal with some of the most heavily soiled linens of any industry: the clothes for dairy products, workers' uniforms, aprons, etc. require specific and effective processes which is why we offer highly programmable controls and reliable machines. Do you need to comply with specific legislation? We have the solution: our equipment are able to cover the most demanding hygienic standards, with specific programs for solving every washing and drying needs.

## Health services

There are bacteria and viruses that cannot be removed through traditional washing, a potentially infected fabric requires greater attention and a different, specific, process. It's necessary to rely on solutions that are efficient and simple to manage and able to drastically limit the human error. Hospitals, clinics or hospices, then, require a certified and easily traced hygiene process (RABC - UNI EN 14065). Our aseptic laundry solution ensures all this: changing completely the way in which the area and staff are managed, it allows to provide a certified service, in terms of safety and hygiene.

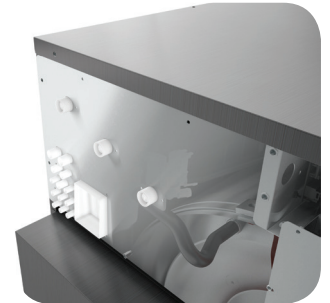


# Sustainability + Safety



## Eco-friendly soul

The patented DWS system (dynamic weighing system) optimises the consumption of energy, water and detergents according to the real amount of laundry loaded, reducing the waste and the environmental impact. The amount of unused water, normally present between the drum and the tub, is reduced thanks to a slight shift of the two components, while the position of the discharge valve, placed immediately under the tub, prevents the deposit of detergents and water. Due to the second optional water discharge valve, instead of being immediately deleted in the sewer, the water is recovered and used later. Moreover, three water inlets allows to reduce the consumption of hard and soft water, improves the dosage of detergents and balances the amount of cold and hot water, minimizing the necessity of heating. The mixer with 13 inlets, combines water and detergents before they come into contact with the fabrics. G4-Wiz also optimises the speed rotation of the drum and the distribution of the load inside the machine, guaranteeing great results with minimum mechanical stress. Finally, the particular design of the drum ensure an effective washing and spin cycle (up to 400G for GWH, up to 200G for GWM and up to 100G and for GWN) without stressing the fibres.



## Easy installation

These washing machines are designed to be installed by a single person. The detergent mixer can manage up to 13 pumps of liquid soap from the rear, thus simplify the connecting phase. Due to the size of the slim, the lightweight frame and the maintenance only from the front and back of the equipment, is possible to install multiple washing machines side by side or combining with dryers. Finally, the machine produces little ground vibration, thus avoiding the costs for additional soundproofing and cushioning in the installation phase.

## Ergonomic mind

Thanks to G4-Wiz the interaction with the machine is easy. The machines have a large porthole opening up to 180° for simplify the loading/unloading of laundry, while the strong hinges provide precise and fluid opening. The position of the dispenser is designed to facilitate the manual dosage of the detergents. Also the coin acceptor is aesthetically and functionally integrated in the front to facilitate the self-service payment. Moreover, the low noise gives the user additional comfort of use. Finally, the shape and size of the machine allow a better use of the laundry space.

## Easy maintenance

The discharge valve and the resistors are accessible from the front. The bearings of the drum are separate from the crosspiece and removable as a single component from the rear. All of this helps to make the maintenance faster and easier. The electric and electronic components are protected inside anti-fouling containers as required by the international standards. The INCOLOY® steel resistors and the EPDM® rubber gaskets are long-lasting and prevent the limes deposit. The flat transmission belt reduces the maintenance and tensioning procedures. The components are certified according to international standards. In addition, the control system allows to schedule the maintenance, according to the real use of the machines: analyses number and type of cycles, mechanical stress level, etc. allowing to plan the maintenance ahead of time.

## Safety on your fingertip

The entire process is handled by the control system that stops the machine as quickly as possible. This happens due to the interaction with an electronic board designed and certified for the management of the machine's safety. The appliance has also double safety systems and redundant alarm circuits, like an airplane, including the porthole lock. All it's certified according to the strictest international standards by an accredited laboratory.



GWM80 - 105 - 135  
GWN180 - 240 - 280

## Our experience at your disposal

The patented DWS weighing system ensures high efficiency even with partial loads. Recent studies have shown that the washing machines are almost never loaded according to their real capacity. So the DWS system adjusts the dosage and consumption on lower loads. For example, with a 70% of loading, the machine uses 30% less of detergent and the cycle is 5 minutes shorter than usual with a lower water consumption. This means also less power required without any change of the quality of washing.

## Ready for future business

The control system of our machines can be easily upgraded through the useful smartcards. Diagrams, programs and updates are then an easy task! So our machines, therefore, do not only adapt themselves to the current demands but are also ready for the future developments. A purchase that lasts over time!

\* The patented DWS system independently determines the reduction of resource consumption in relation to the real laundry loaded in the machine (in kg). Consumption corresponding to 100% of the nominal load was calculated according to the international regulatory standard ISO 9398. The standard provides for the examination of the performance of the machine as a function of a washing cycle composed of a washing phase at 60°C, 3

rinse phases and a final full power spin, corresponding to a load equal to a nominal capacity with a 1:10 ratio, of towels cotton fabric weighing 420g/m<sup>2</sup> with dimensions of 60cm x 90cm.

\*\* The dosage of detergents is automatically reduced in case it's chosen the direct management of the dosing pumps by the control system.

CHARACTERISTICS	GWM8	GWM11	GWM14	GWN18	GWN24	GWN28
Drum volume	dm <sup>3</sup> 75	dm <sup>3</sup> 105	dm <sup>3</sup> 135	dm <sup>3</sup> 180	dm <sup>3</sup> 240	dm <sup>3</sup> 280
Drum perforation	Around 8%	Around 8%	Around 8%	Around 8%	Around 8%	Around 8%
Programs number	20	20	20	20	20	20
UR percentage (GWM/GWN)	53÷70%	53÷70%	53÷70%	80÷100%	80÷100%	80÷100%

### 100% NOMINAL CAPACITY\*

Water per cycle	lt. 71.1	lt. 85.9	lt. 116.2	lt. 154	lt. 205.5	lt. 245
Power consumption	KWh1.563	KWh2.332	KWh3.125	KWh5.168	KWh6.450	KWh7.847
Cycle length	55min	55min	56min	56min	58min	60min
Detergents**	100%	100%	100%	100%	100%	100%

### 70% NOMINAL CAPACITY\*

Water per cycle	lt. 49.5	lt. 60.2	lt. 81.4	lt. 110.7	lt. 154	lt. 172
Power consumption	KWh1.158	KWh1.578	KWh1.998	KWh3.166	KWh3.713	KWh4.459
Cycle length	50min	51min	50min	50min	51min	52min
Detergents**	70%	70%	70%	70%	70%	70%

### 50% NOMINAL CAPACITY\*

Water per cycle	lt. 35.5	lt. 43	lt. 58.1	lt. 90	lt. 115	lt. 142.5
Power consumption	KWh0.888	KWh1.188	KWh1.488	KWh2.232	KWh2.713	KWh3.246
Cycle length	45min	46min	47min	46min	49min	50min
Detergents**	50%	50%	50%	50%	50%	50%

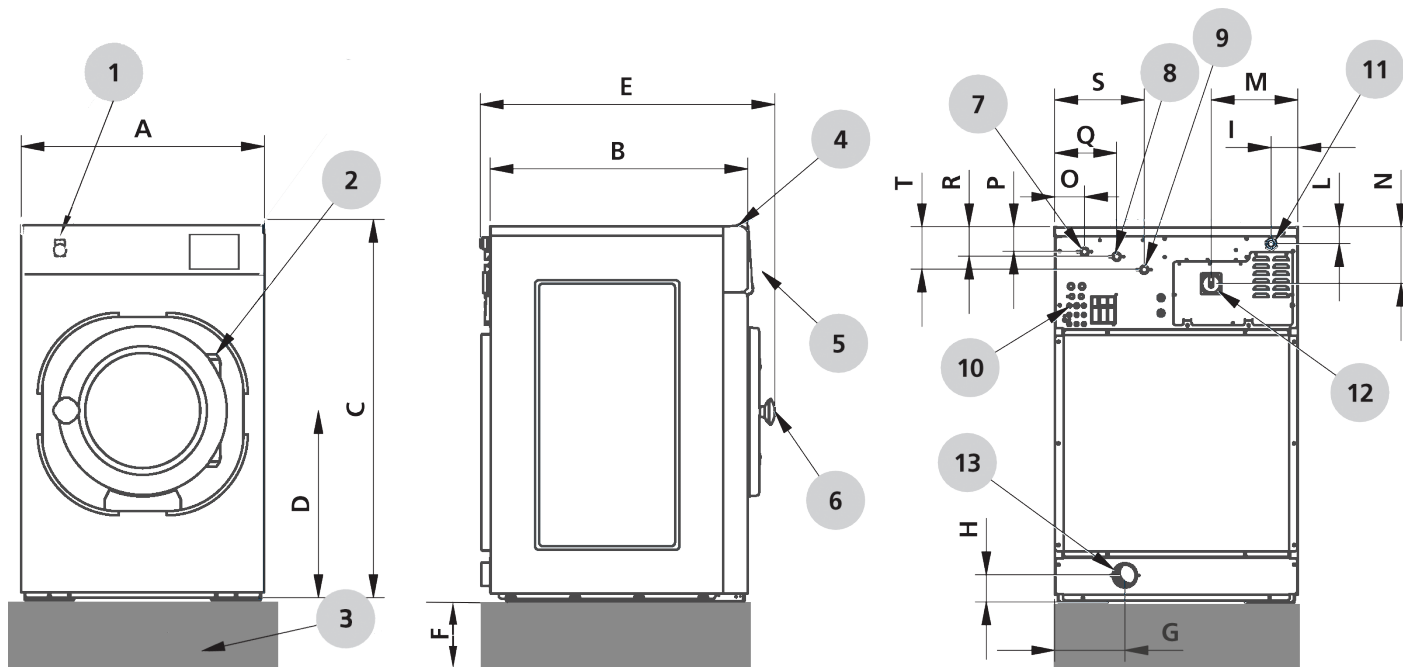
# Let's take the measurements

CHARACTERISTICS	GWM8	GWM11	GWM14	GWN18	GWN24	GWN28
Capacity ratio 1:10 kg*	4 ÷ 8	5.3 ÷ 10.5	6.75 ÷ 13.5	9 ÷ 18	12 ÷ 24	14 ÷ 28
Capacity ratio 1:9 kg*	4.5 ÷ 9	6 ÷ 12	7.5 ÷ 15	10 ÷ 20	13.5 ÷ 27	16 ÷ 32
Dynamic weighing DWS	Yes	Yes	Yes	Yes	Yes	Yes
Electronic imbalance control	Yes	Yes	Yes	Yes	Yes	Yes
Spin (rpm) / G Factor	820 / 200	760 / 200	760 / 200	490 / 100	490 / 100	490 / 100
Noise level (dB)	<65	<65	<65	<65	<65	<65
Control	G4-Wiz	G4-Wiz	G4-Wiz	G4-Wiz	G4-Wiz	G4-Wiz
Payment systems	Mechanical coin meter / Electronic coin meter / Central payment unit / Other systems on request					
Heating power (kW)	6/9	6/9/12	9/12	12/18	18	22
Motor power (kW)	0.5	0.8	1.0	1.10	1.6	2.30
Electric power supply	220-240V 1~ 50/60Hz 230-240V 3~50/60Hz <b>380-415V 3N 50/60Hz</b> 440V-480V 3~ 60Hz					
Net/Gross weight (kg)	135 / 145	170 / 185	190 / 200	255 / 270	275 / 290	290 / 305
Dynamic floor loading (kN)	1.6 ± 2.4	1.9 ± 4.0	2.2 ± 5.10	2.7 ± 3.60	3.0 ± 4.8	3.22 ± 5.60
Porthole diameter (mm)	330	410	410	460	460	460

Provide GFCI (differential switch) Class "B" once the appliance is installed



# Let's take the measurements



- 1 Emergency button (opt.)
- 2 Porthole hinge
- 3 Concrete floor where anchoring the washing machines with 4 bolts of M16x150 with 100 Nm torque
- 4 Aesthetic angle closure
- 5 Dashboard
- 6 Handle
- 7 Soft water connection 3/4"
- 8 Hard water connection 3/4"
- 9 Hot water connection 3/4"
- 10 Soap connection (13)
- 11 Electrical connection
- 12 Disconnecter
- 13 Drain (3")

	A	B	C	D	E	F	G	H	I	L	M	N	O	P	Q	R	S	T
GWM80 (mm)	795	660	1245	620	780	25	230	88	88	55	284	185	98	80	203	96	293	138
GWM105 (mm)	795	660	1245	620	780	25	230	88	88	55	284	185	98	80	203	96	293	138
GWM135 (mm)	795	830	1245	620	935	25	230	88	88	55	284	185	98	80	203	96	293	138
GWN180 (mm)	970	940	1460	765	1000	25	270	109	88	55	329	185	98	100	203	143	308	185
GWN240 (mm)	970	1045	1460	765	1105	25	270	109	88	55	329	185	98	100	203	143	308	185
GWN280 (mm)	970	1187	1460	765	1247	25	270	109	88	55	329	185	98	100	203	143	308	185

Width    Depth    Height

## **Credits**

agenzia:  
consilia.it

grafica e art direction:  
Consilia.it

copy:  
Giovanna Cesarato

## **Grandimpianti I.L.E. Ali Group S.r.l. a Socio Unico**

Via Masiere 211/c  
32037 Sospirolo (BL) Italy

### **informations**

info@grandimpianti.com  
ph. +39 0437 848711  
fax +39 0437 879108

### **sales**

com@grandimpianti.com  
ph. +39 0437 848711

### **customer care**

tec@grandimpianti.com  
ph. +39 0437 848800





**grandimpianti i.l.e - Ali Group S.r.l. a Socio Unico**  
via masiere, 211/c - 32037 sospiolo (BL) Italy  
ph. +39 0437 848 711 - fax +39 0437 879 108  
[www.grandimpianti.com](http://www.grandimpianti.com) - [info@grandimpianti.com](mailto:info@grandimpianti.com)



COMPANY WITH  
MANAGEMENT SYSTEM  
CERTIFIED BY DNV GL  
= ISO 9001 =  
= ISO 14001 =

an Ali Group Company



The Spirit of Excellence